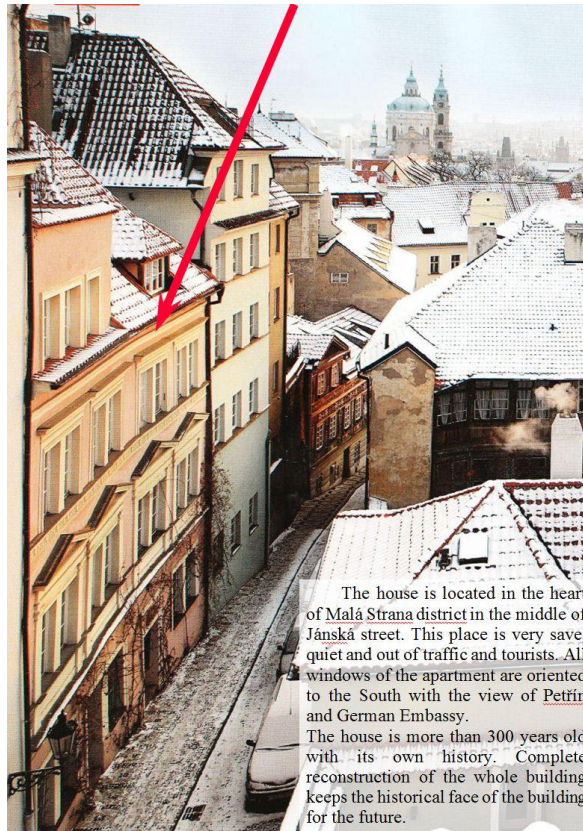


Lease of luxurious apartments House „By Dragon“ Prague - Malá Strana – Jánská 8



The house is located in the heart of Malá Strana district in the middle of Jánská street. This place is very safe, quiet and out of traffic and tourists. All windows of the apartment are oriented to the South with the view of Petřín and German Embassy.

The house is more than 300 years old with its own history. Complete reconstruction of the whole building keeps the historical face of the building for the future.

There are six apartments in the house.
Please, read details of available flats.

APARTMENTS	REMARKS	RENT (CZK/month)
apartment #1	available from July 2011	11.000,-
apartment #2	not available	-
apartment #3	not available	-
apartment #4	available	15.000,-
apartment #5	not available	-
apartment #6	not available	-

Remark: Rent does not include utilities (electricity, gas, water and telephone bills).

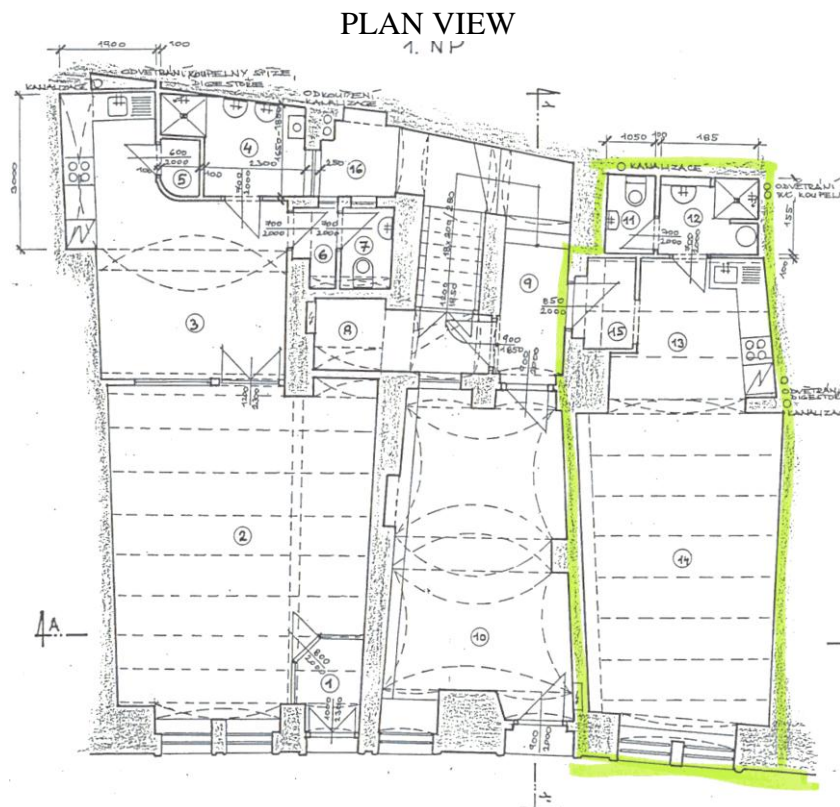
In case of interest please contact:

Petr Nowak
mobile: (00420) 603 840 114
mail: petr@nowak.cz

Apartment #1 - Ground floor

- total area 37,2 m²
- one toilet with bidet shower, shower bath, one washbasin
- central electrical heating
- telephone line to the new digital central
- historical wooden ceiling
- entrance from the corridor
- central TV-satellite connection
- central vacuum cleaner “Beam”
- fully equipped kitchen – cupboards, sink, fridge, electric cooker, electric stove, digester, dishwasher

pos.	description	flooring (m2)	floor material	ceiling
11	toilet	1,4	tiles	plaster
12	washroom	2,8	tiles	plaster
13	hall, kitchen	10	parquet	timber
14	living room	23	parquet	timber
	total area	37,2		



LIVING ROOM



KITCHEN CORNER

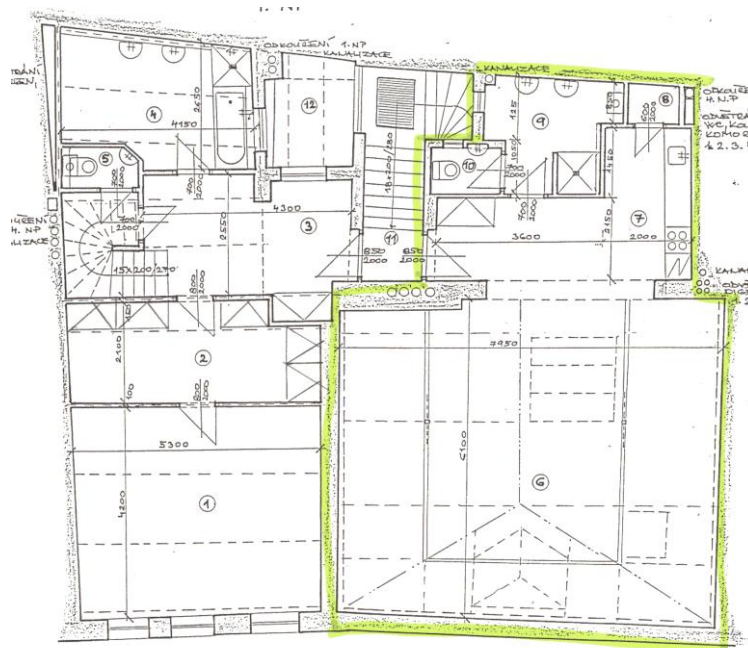


Apartment #4 - fourth floor

- attic apartment
- total area 73 m²
- one toilet with bidet shower, shower bath, two washbasins, compartment
- central gas heating
- telephone line to the new digital central
- wooden ceiling - carpentry
- built-in cupboard in hall and cloakroom
- entrance from the corridor
- central TV-satellite connection
- central vacuum cleaner "Beam"
- readiness for installation of gas fireplace in living room
- fully equipped kitchen – cupboards, sink, fridge, electric cooker, electric stove, digester, dishwasher

pos.	description	flooring (m2)	floor material	ceiling
8	hall	8	parquet	timber
9	toilet	1,4	tiles	plaster
10	washroom	4,5	tiles	plaster
11	compartment	1,2	tiles	plaster
	kitchen	10	parquet	timber
13	living room	48	parquet	timber
	total area	73,1		

PLAN VIEW



LIVING CORNER



LIVING ROOM



PANORAMA FROM THE WINDOW



BATHROOM



PICTURE GALLERY

SUMMER FRONT VIEW



ENTRANCE VIEW WITH DRAGON



VIEW FROM TERRACE IN 5th FLOOR



VIEW FROM PETŘIN HILL



ORTHO-PHOTO MAP



3D VIEW FROM GOOGLE MAPS

